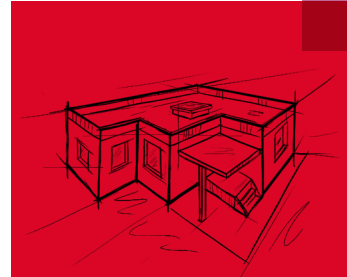


Rockspecc Specification Toolkit



Professionals in the building industry are constantly looking for speed and easy access to information that they need for their projects, while still having multiple choices of products and systems in their specifications.

ROCKWOOL Rockspecc brings with it exactly this set of solutions – and at no costs at all.

Rockspecc enables you to find and select different options of products and systems based on your

project's technical specification requirements. It brings together the extensive consulting skills and experience of ROCKWOOL in the field of insulation into one comprehensive, easy to use toolkit.

Whether you just want to select a product or a system or making a final selection of multiple systems, Rockspecc toolkit provides you with the complete documentation, downloadable for your project specification submission.

Rockspec Toolkit is for everyone

Rockspec is so simple and easy to use – it can benefit everyone who is doing building construction and management. The tool allows you to select product or system based on various requirements such as Thermal Transmittance (U-Value), Sound Transmission Class (STC), different approvals type like Factory Mutual (FM), UL, Green Building, or EUCEB, system thickness and others.

A wide range of general building application like internal and external wall, under deck and over deck roofing system, ceiling system, are covered in this tool. Rockspec is also able to filter the systems into building types such as hotels or schools and into occupancy types such as sleeping area or conference room.

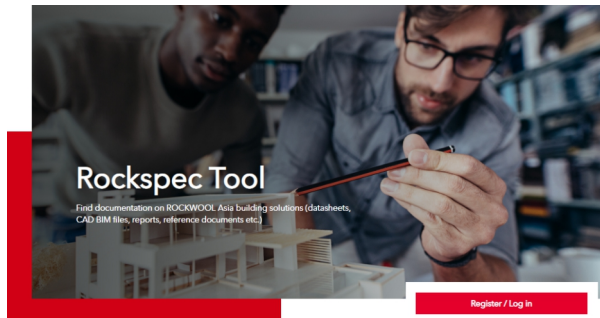
Only ROCKWOOL Rockspec can offer a complete solution in its toolkit:

- Both products and building elements information (such as for walls, roofs, ceilings, etc.)
- Systems covered under this tool includes:
 - Internal wall
 - External wall
 - Sandwich panel wall
 - Single skin roofing
 - Double skin roofing
 - Flat roof
 - Sandwich panel roof
 - Ceiling
- System Information on:
 - Weight of product, thickness of system, system description
 - Material Specification
 - STC report, U-Value report, Auto Cad drawing, BIM models
 - Product data sheet
 - System configuration
 - Installation and workmanship
 - MSDS, Handling and Storage, Sustainability fact sheet, FAQ
 - Certification
- More than 300 system variants
- More than 400 Auto-Cad drawings
- Pick and choose multiple systems for a single project and have the ability to download those information

Rockspect Easy to Use Guide

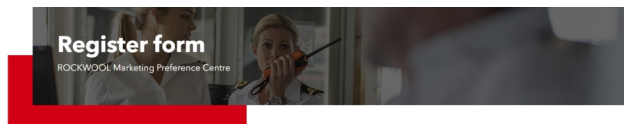
Step 1

Access Rockspect through:
www.selector.rockwoolasia.com or
www.rockwoolasia.com



Step 2

Register your user account



Register

Register for fast access to all ROCKWOOL technical tools

TOOLS AND DATA INFORMATION

It is our policy to create accurate tools to assist in the specification of your project. Whilst we make every effort to ensure the accuracy and completeness of the advice given, the calculation you receive is based on the information you have provided to ROCKWOOL, or on your behalf, and therefore shall be used for general information only.

As ROCKWOOL does not have a complete insight in, and control over, the correctness of the input data provided, the calculations are theoretical and should not be relied upon for any specific application without independent verification by the project's engineer of record, architect, or another party acting in similar capacity.

ROCKWOOL has provided this guidance in good faith and cannot be held responsible for any omissions, changes in regulations or deviations from building practices. By using these tools you agree for ROCKWOOL to process and store the data you provide for the purpose of providing technical guidance.

First name *	Mobile phone *
Second name *	Email *
Company	Password *
Address *	Repeat password *
Postal code *	Password strength meter *
Title	

STAY IN CONTACT

If you would like to stay in contact, please tell us how you would like for our relationship with you to go forward (tick box below)

I wish to be contacted about all ROCKWOOL Marketing and Technical Information

Or you can select any of the following that you feel is relevant to you.

- | | | |
|---|---|---|
| <input type="checkbox"/> New product launches | <input type="checkbox"/> Events & Exhibitions | <input type="checkbox"/> Standards & Regulations |
| <input type="checkbox"/> CPD & Training | <input type="checkbox"/> Product promotions | <input type="checkbox"/> Price Lists |
| <input type="checkbox"/> Industry news | <input type="checkbox"/> Competitions | <input type="checkbox"/> Technical tools (inc. BIM) |

Communication Preference

- Email Direct mail SMS

You can unsubscribe from marketing at any time, simply visit your account and untick your preferences - our system will be immediately updated. Your privacy is important to us, you can learn more about how we use and store your data, by reading our privacy policy on our website.

To continue receiving our updates, we kindly ask you to confirm the following by clicking the "Register" button:

Yes, I would like to get updates from ROCKWOOL Building Materials (Singapore) Pte Ltd on ROCKWOOL Group brands, products & services. You may unsubscribe at any time using the unsubscribe link in rockwoolasia.com website.

At any time, you have the right to object to the processing of your personal data for direct marketing purposes by contacting us.

ROCKWOOL Building Materials (Singapore) Pte Ltd is committed to safeguarding your privacy on-line. Please read our Privacy Statement from this link* for more information.

Fields marked with * must be completed.

Register

Step 3

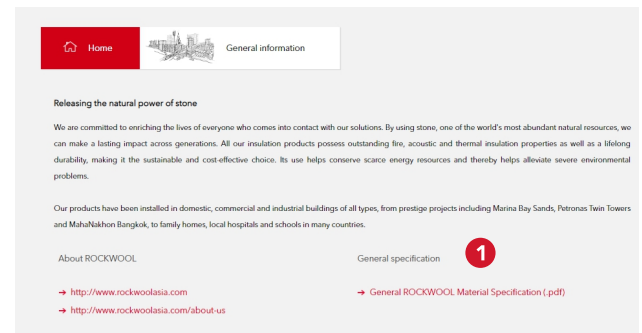
Select the product and system as per your project requirements based on three search categories:
 General information, Product selector or System selector



Step 4a

General Information

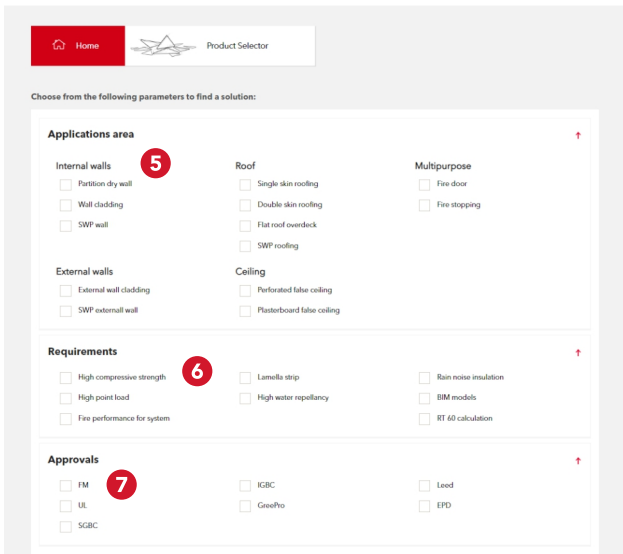
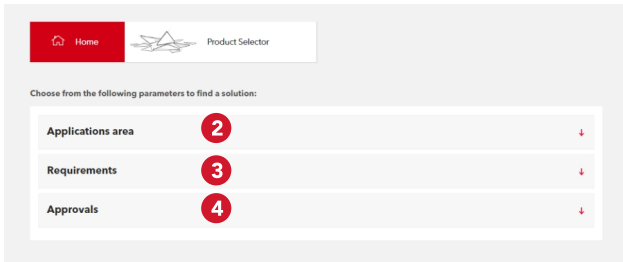
- General information about ROCKWOOL
- ROCKWOOL stone wool master specification is available in section 1



Step 4b

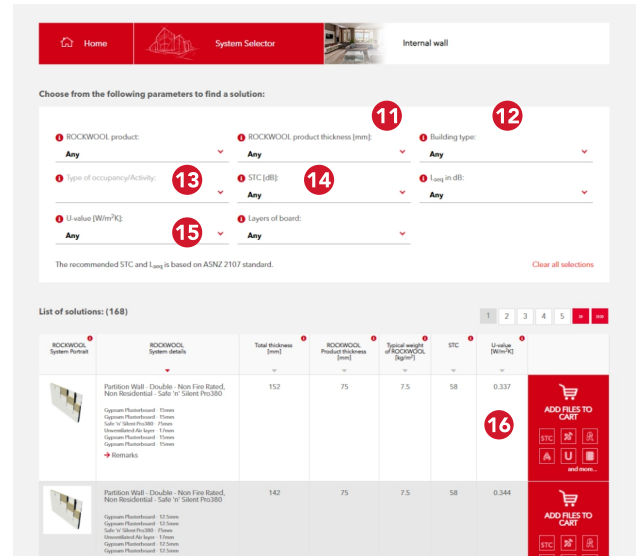
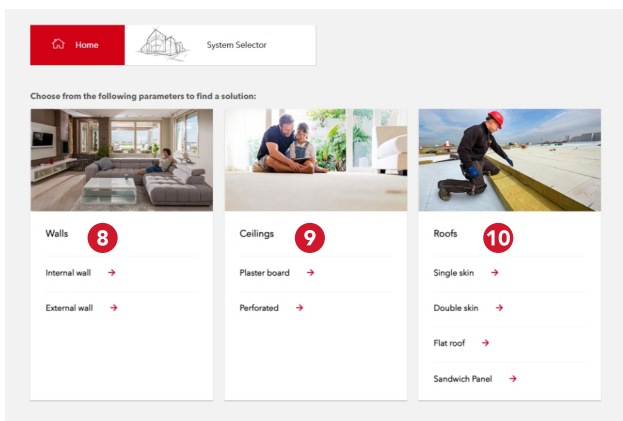
Product Selector

- Search Products by Application area ², Requirements ³ or Approvals ⁴
- Application area section ⁵ covers Internal walls, Roof, External walls, Ceiling and Multipurpose
- Requirements section ⁶ covers different requirements like High compressive strength, High water repellency, Rain noise, Fire performance and others
- Approval section ⁷ covers requirements like FM, UL, LEED, EPD, Green Building and others
- Relevant product information and data sheets are also available based on your selection.



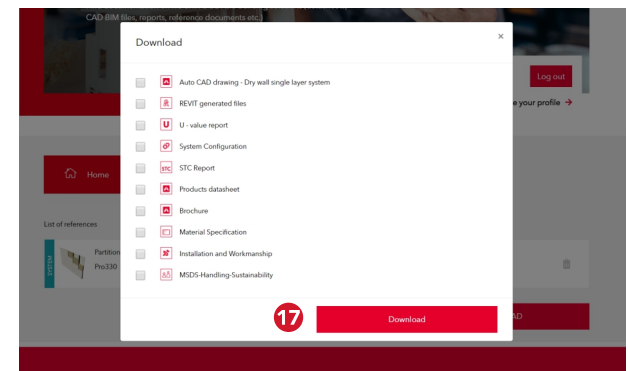
Step 4c System Selector

- Search for the appropriate Walls **8**, Ceilings **9** or Roofing **10** systems
- Select the systems based on ROCKWOOL product **11**, Building type **12**, Type of occupancy **13**, STC requirement **14** or U-Value requirement **15**
- Add to Cart **16** in order to view and download the document

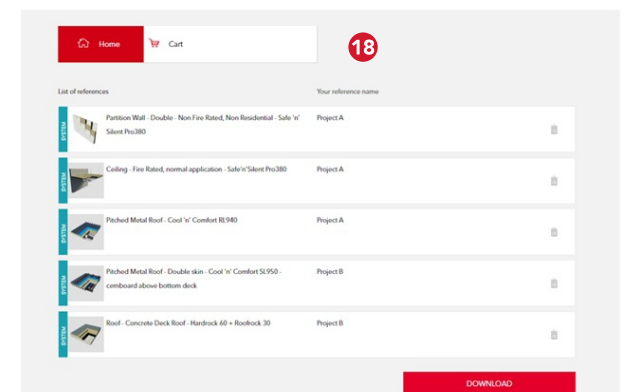


Step 5 Download and save

- Give a name to your project and download all the information **17** as needed.
- Downloadable documents includes U-Value report, STC report, Auto-CAD drawing, Material specification, System configuration, Installation and workmanship, etc.



- Multiple systems can be added under a single project **18** by adding them into the Cart.



All products and systems are now
at your fingertips!

Register at www.selector.rockwoolasia.com
or www.rockwoolasia.com and start using
the ROCKWOOL Rockspec Toolkit.

Disclaimer: ROCKWOOL Rockspec Toolkit has been assembled with the greatest possible care by ROCKWOOL Asia. The statements and data contained in Rockspec website are for general information purposes only. They are our opinion or specific technical recommendations as to any particular design or application and the ultimate determination as to product or system suitability is the sole responsibility of the installer or end user. Although the information contained herein, including ROCKWOOL Asia product descriptions, is believed to be correct at the time of publication, accuracy cannot be guaranteed. The user of the site is exclusively responsible for the input of the data and is aware that theoretical values can deviate from those occurring in practice. Use of this site does not ensure or guarantee the outcome of calculations nor guarantee compliance with any building codes in your geographic region. Please consult your local authorities before finalising your installation plans. ROCKWOOL Asia fully reserves the right to make product specification changes, without notice or obligation, and to modify or discontinue any of its products at any time.

**Indonesia Representative Office
ROCKWOOL Malaysia Sdn Bhd**

Wisma Pondok Indah Tower 3,
17th Floor, Jl. Sultan Iskandar
Muda V, Jakarta 12310,
Indonesia
T (+62) 21 2965 9071
F (+62) 21 2953 8998

ROCKWOOL Malaysia Sdn Bhd

Lot 4, Solok Waja 1,
Bukit Raja Industrial Estate,
41050 Klang, Selangor, Malaysia
T (+60) 3 3341 3444
F (+60) 3 3342 7290

**ROCKWOOL Building Materials
(Singapore) Pte Ltd**

No. 8, Tuas Avenue 2,
Jurong Town,
Singapore 639448
T (+65) 6861 4722
F (+65) 6862 3533

ROCKWOOL (Thailand) Limited

B.GRIMM Building 11th Floor
No.5, Soi Krungthepkreetha 4
Huamark, Bangkok
Bangkok 10240, Thailand
T (+66) 2731 7511-14
F (+66) 2731 7510

**Vietnam Representative Office
ROCKWOOL (Thailand) Limited**

9th Floor, TNR Tower,
180-192, Nguyen Cong Tru Street,
District 1, Ho Chi Minh City,
Vietnam
T (+84) 8 6288 2009
F (+84) 8 6288 4691